

# Lower Ku-band 2W/4W BUC

## MODEL No. NJT8315 & NJT8316 series

### < Features >

#### \* RF Frequency Line-up

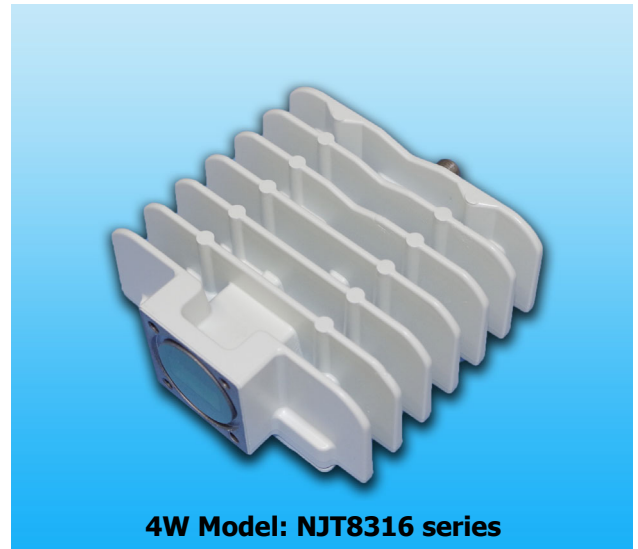
- Lower Ku-band: 12.75 to 13.75 GHz

#### \* High Efficiency Output Power

- (4W Model) •P1dB: +36.0 dBm min. over temp.  
•Power Consumption: 28 W
- (2W Model) •P1dB: +33.0 dBm min. over temp.  
•Power Consumption: 18 W

#### \* Small Size & Light Weight

- (4W Model) •Dimension: 98 × 98 × 42.5 mm  
•Weight: 500 g
- (2W Model) •Dimension: 91.55 × 68 × 42.5 mm  
•Weight: 350 g



4W Model: NJT8316 series

### < Line-Up >

Model No.	RF Frequency	Local Frequency	IF Frequency	Output Power @ P1dB	IF Connector	Power Supply
NJT8316N	12.75 to 13.25 GHz (Lower Ku-band)	11.80 GHz	950 to 1,450 MHz	4W Linear (+36.0dBm min.)	N-type	+12 to +30 V DC Power
NJT8316F				F-type		
NJT8315N				2W Linear (+33.0dBm min.)	N-type	
NJT8315F				F-type		

### < Specifications >

Item	Specifications	
	4W Model: NJT8316 series	2W Model: NJT8115 series
Output Interface	Waveguide, WR-75 (with Groove)	
Input Interface	N-type female connector, 50 ohms / F-type female connector, 75 ohms	
Output Power @ 1dB G.C.P. (P1dB)	+36.0 dBm min. over temperature	+33.0 dBm min. over temperature
Linear Gain	62 dB nom., 56 dB min.	59 dB nom., 53 dB min.
Gain Variation over frequency	5 dBp-p max. over 500 MHz / 2 dBp-p max. over 54 MHz	
Gain Stability over temperature	2 dBp-p typ., 5 dBp-p max.	
ACPR	-26 dBc min. @ Pout = +35.0 dBm	-26 dBc min. @ Pout = +32.0 dBm
L.O. Phase Noise	-60 dBc/Hz max. @ 100 Hz -80 dBc/Hz max. @ 10 kHz -100 dBc/Hz max. @ 1 MHz	-70 dBc/Hz max. @ 1 kHz -90 dBc/Hz max. @ 100 kHz
Input / Output V.S.W.R.	2 : 1 max. / 2 : 1 max.	
Power Requirement		
(1) Voltage Range	+12 to +30 V DC Power	+12 to +30 V DC Power
(2) Power Consumption	28 W typ. @ Pout = +36.0 dBm 20 W max. @ No IF, +25 °C	18 W typ. @ Pout = +33.0 dBm 14 W max. @ No IF, +25 °C
Mute	Shut off the HPA in case of L.O. unlocked or no 10 MHz reference signal	
Temperature Range (ambient)	Operating: -40 to +60 °C / Storage: -40 to +75 °C	
Dimension & Housing without interface connector and screws	98 (L) × 98 (W) × 42.5 (H) mm [3.86" (L) × 3.86" (W) × 1.67" (H)]	91.55 (L) × 68 (W) × 42.5 (H) mm [3.60" (L) × 2.68" (W) × 1.67" (H)]
Weight	500 g [1.1 lbs]	350 g [0.77 lbs]

\*Note: The contents of this sheet are subject to change without notice.

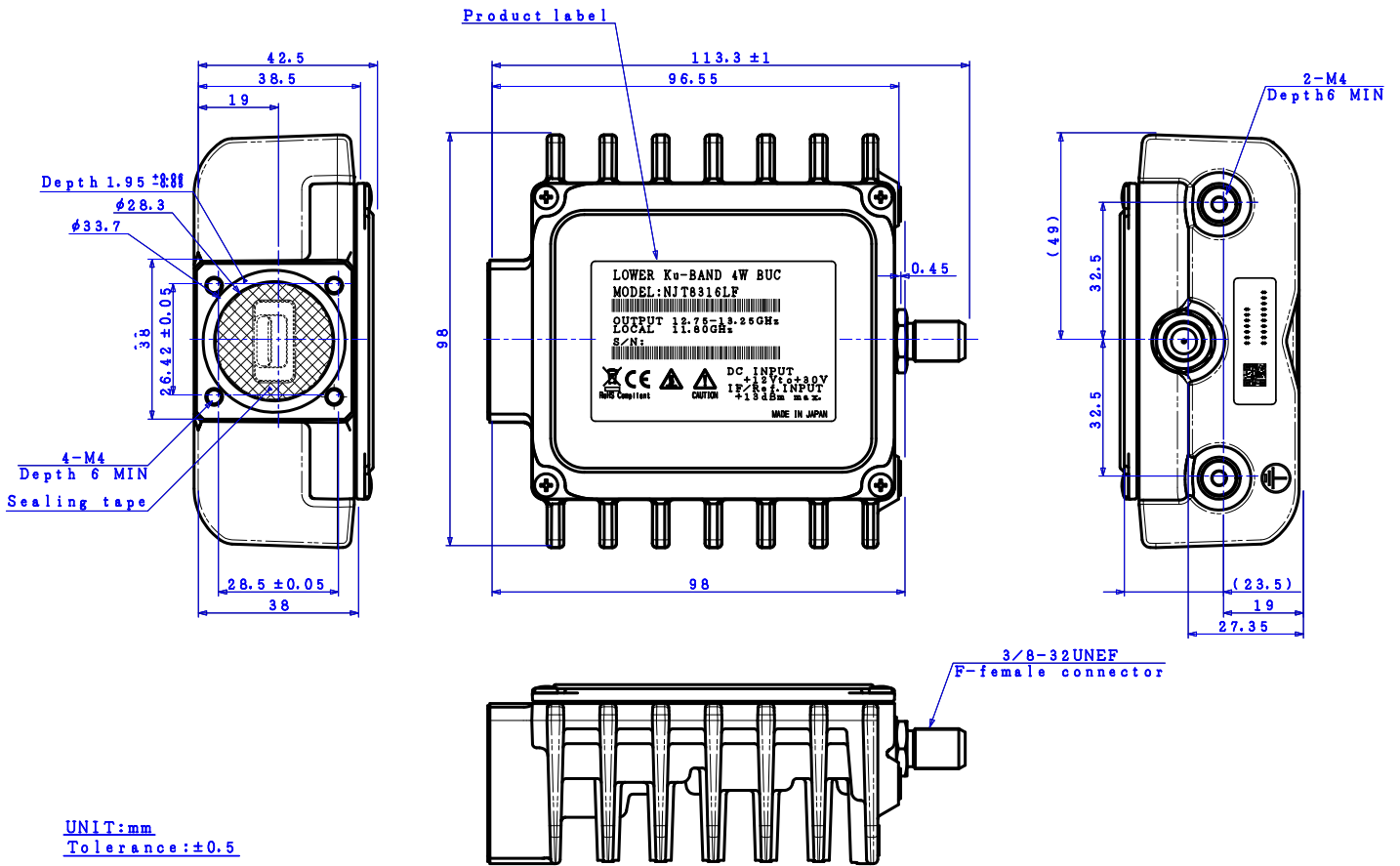
(1/2)  
Rev.00-04[Jun.2019] LowKu 2W/4W BUC\_NJT8315/16

# Lower Ku-band 2W/4W BUC

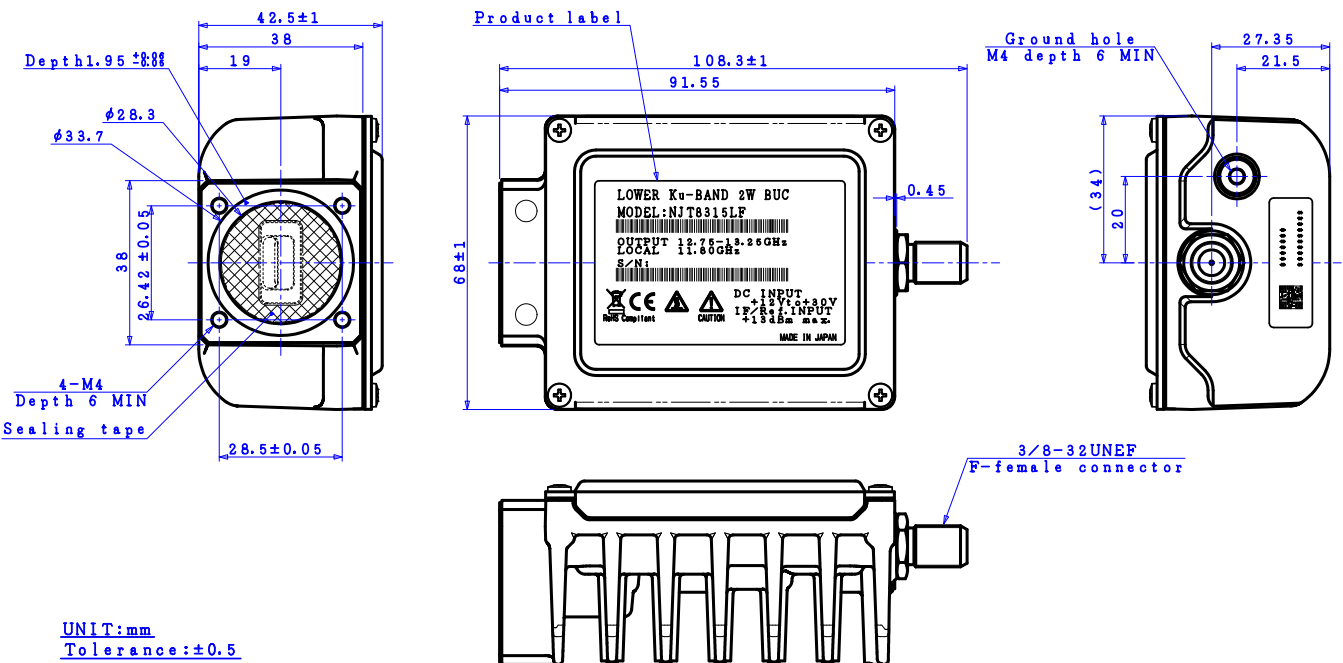
## MODEL No. NJT8315 & NJT8316 series

### < Outline >

#### 4W Model, F-type female Connector: NJT8316F



#### 2W Model, F-type female Connector: NJT8315F



\*Note: The contents of this sheet are subject to change without notice.