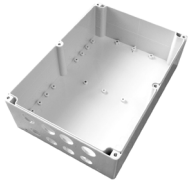


# RouterBOARD Big Outdoor Case

## Installation Guide and Warranty Information

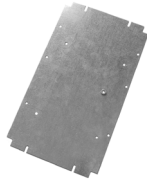
This document will guide you through assembling the MikroTik Big Outdoor Case. The following parts should be included when you receive it:



A: Box base



B: Box lid



C: Baseplate



D: Mounting rings



E: Isolation cord



F: Lid screws



G: Ground screw



H: Seals



I: Rail and Wingnut



J: Spacers



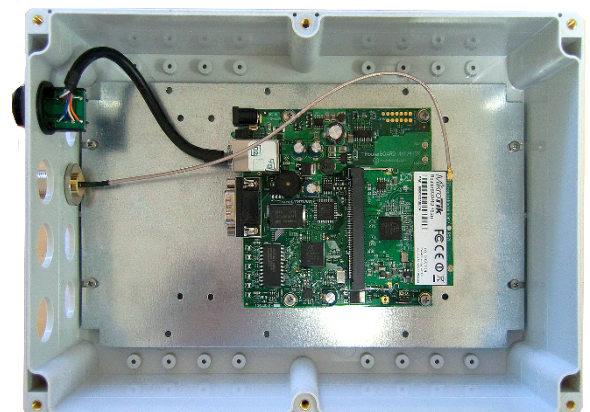
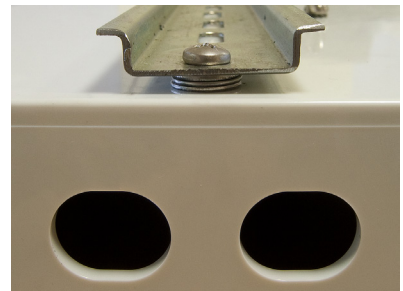
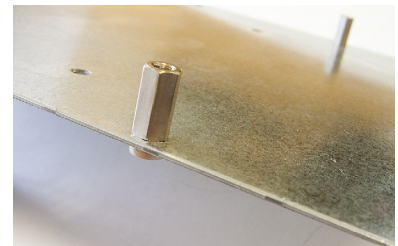
K: Plate screws



L: Selfscrews

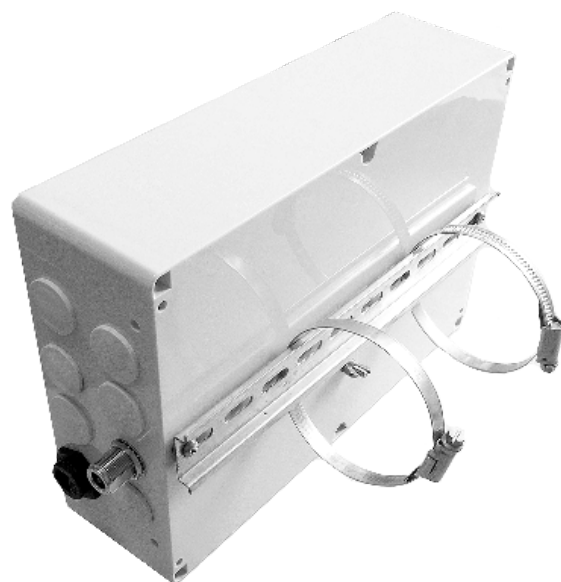
## Assembly instructions

1. Mount antenna pigtails and Ethernet insulators in their respective holes. Seal the unused holes with the provided rubber seals H
2. Install the spacers J on the baseplate C using screws K, as in the picture. Spacers should be placed on top of the baseplate in the positions desired (depends on the type of RouterBOARD you will use) and fastened with screws from underneath.
3. Place the baseplate inside the case box, minding the orientation of the baseplate. Note that if you have installed the baseplate correctly, a hole in the case will match a respective hole in the baseplate – this hole is for the grounding screw. Install the grounding screw G in this hole. It is supposed to go all the way through the case, where the jagged washer and Wingnut should connect the grounding.
4. Attach the baseplate to the box with the K screws at it's top and bottom.
5. Attach the mounting rail with the selfscrews to the bottom of the box, screw the rail to the pre-made screw holes **through three washers** - this is to maintain a distance between the box and the rail, to allow space for mounting rings (see image).
6. Place the RouterBOARD device on the baseplate and secure it with the K screws to the previously installed spacers. Insert the ethernet cable into the device port, and attach the pigtail to the wireless card.
7. Insert the rubber isolation cord E into the shaft near the edge of the case cover B, and trace the cord all the way around the cover. The cord is supposed to be longer than needed – you will need to cut it so that both ends are slightly overlapping. The cord should match the ridge near the edge of the base A. Close the case and secure the cover with the screws F.
8. Use the rings D to fasten the case on the mast. Mind the orientation: it must be mounted with connectors down, as there are two small ventilation holes, which must be pointed down to avoid water leaking inside the case. Make sure to tighten the rings reliably to prevent the device shift/rotate in high wind.



## Connecting External Antenna Cable (optional)

If the RouterBOARD was purchased with external antenna connector option, screw the connector of the antenna cable on the appropriate antenna attachment of the case. Hand tighten the connector (do not use vice grips for this job). When tying the coaxial cable, make sure no water can get into it and/or into the equipment it is attached to. It is very important to seal the connection properly with a good rubber tape made particularly for this purpose (note that many general purpose tapes will not prevent moisture to leak into connector, or will fail after some time). Note: do not bend the cable straight: you should keep a radius of curvature allowing the cable to bend without applying force.



## Safety Precautions

**IMPORTANT: LIVES MAY BE AT RISK!** Contacting power lines may cause injury or death. Make sure that in no case may equipment or personnel come in direct or indirect contact with power lines. All overhead wiring should be assumed to be power lines. Ensure that the mast may not contact power lines even if it falls during or after installation. If a person comes in contact with electricity and is not able to move, you **MUST NOT** touch that person to avoid the same fate! Instead, use a known non-conductive stick or rope to pull him/her away from the electric line.

Respect safety procedures when working above the ground. Do not work alone: a friend or co-worker can save your life in case of an accident.

## Grounding

The installation infrastructure (towers and masts), as well as antennas and the device itself (there is a small screw with a wing nut on the case with a sticker identifying chassis grounding), must be properly grounded, and lightning arrestors must be installed on all external antenna cables (near the antennas or on the antennas themselves) to prevent equipment damage and human injury. Note that lightning arrestors will not have any effect if not grounded. Note also that damages caused by static electricity and lightning are not covered by warranty.

Use 1 AWG (7mm in diameter) wire with corrosion-resistant connectors for grounding. Be sure to check that the grounding infrastructure you use is indeed functional (as opposed to decorative-only grounding present on some sites).

## Copyright and Warranty Information

**Copyright and Trademarks.** Copyright MikroTiks SIA. This manual contains information protected by copyright law. No part of it may be reproduced or transmitted in any form without prior written permission from the copyright holder. RouterBOARD, RouterOS, RouterBOOT and MikroTik are trademarks of MikroTiks SIA. All trademarks and registered trademarks appearing in this manual are the property of their respective holders.

**Hardware.** MikroTiks SIA warrants all RouterBOARD series equipment for the term of one year from the shipping date to be free of defects in materials and workmanship under normal use and service, except in case of damage caused by mechanical, electrical or other accidental or intended damages caused by improper use or due to wind, rain, fire or other acts of nature.

If you have purchased your product from a MikroTik Reseller, please contact the Reseller company regarding all warranty and repair issues, the following instructions apply **ONLY** if you purchased your equipment directly from MikroTik Latvia

To return failed unit or units to MikroTiks you must perform the following RMA (Return Material Authorization) procedure. Follow the instructions below to save time, efforts, avoid costs, and improve the speed of the RMA process. Take into account that all goods have one year warranty.

**Instructions are located on our webpage here: <http://rma.mikrotik.com>**

**Manual.** This manual is provided “as is” without a warranty of any kind, expressed or implied, including, but not limited to, the implied warranty of merchantability and fitness for a particular purpose. The manufacturer has made every effort to ensure the accuracy of the contents of this manual, however, it is possible that it may contain technical inaccuracies, typographical or other errors. No liability is assumed for any inaccuracy found in this publication, nor for direct or indirect, incidental, consequential or other damages that may result from such an inaccuracy, including, but not limited to, loss of data or profits. Please report any inaccuracies found to [support@mikrotik.com](mailto:support@mikrotik.com).